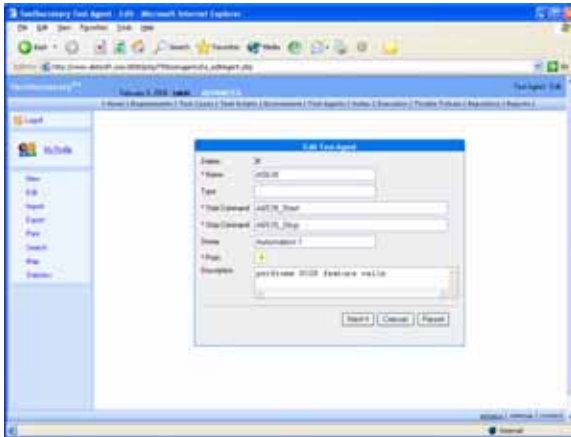


TestSecretary™

TestSecretary is a lightweight, Web-based, cross-platform, multi-lingual, automation centric test management and support system that enables you to deploy quality network products while meeting aggressive timelines and deadlines.

TestSecretary is an automation centric test support system. The application consists of 10 packages, each of which plays an important role in the testing life-cycle. The packages are designed to help: manage your requirements, write test cases, develop or document already developed test scripts, define tests and place them into suites, execute your test manually or with an automation tool agent, report and track testing defects, archive project specific documents and view test related metrics. A Web-based design, multi-platform and multi-lingual support gives the system a global outreach.

TestSecretary provides assistance to different players in a testing team. Each package is designed to address the specific needs of each player; from the project manager to the test engineer.



Manage and run automated tests using the Test Agent package.

With a fully configured version of TestSecretary, each team member has the necessary tools to contribute to the testing process:

- Planners can define testing objectives and requirements.
- Test case experts can develop and write test cases and specify test environments required for testing.
- Automation engineers can develop or integrate existing scripts and programs.

- Quality assurance testers can execute and analyze test, reporting and tracking any defects along the way.
- Project managers can create reports and manage resource allocation.
- Managers can make go/no-go decisions.

Packages

Requirements Management: Enter and track your business requirements using the Requirements package. TestSecretary's Requirements package can be used independently to house and track your business requirements or you can use it in conjunction with other packages to achieve the desired level of traceability. Test requirements can be created directly in TestSecretary or using Excel® and then imported into TestSecretary's repository.

Tests Case Management: The Test Case package allows the tester to build test cases based on requirements. The requirements may come from our Requirements package or from an independent 3rd party application. Test cases are organized into categories and sub categories and are assigned a level of importance. Test cases are also flagged as automatable or non-automatable. Test cases can be created in TestSecretary or using Excel® and then imported into the TestSecretary repository.

Test Script Management: TestSecretary's scripting package enables you to write or document your scripts. Scripts are organized into categories and sub categories and are assigned a status. Input can be generated from within TestSecretary or imported into the repository from Excel® spreadsheets.

Test Suite Management: Create test instances and group them into suites for execution and reporting purposes. Efficient test planning implies that a single test can be run on multiple test environments or platforms. With all the appropriate packages installed, the test suite package allows you to create several test case/environment test instances.

Environment Management: Manage your unique environment using TestSecretary's Environment package. We understand that your test environment differs from everyone else's and is subject to change on short notice. Hence TestSecretary offers the flexibility

required to handle unique dynamic environments. You are given the choice of using this package independently or with our other packages.

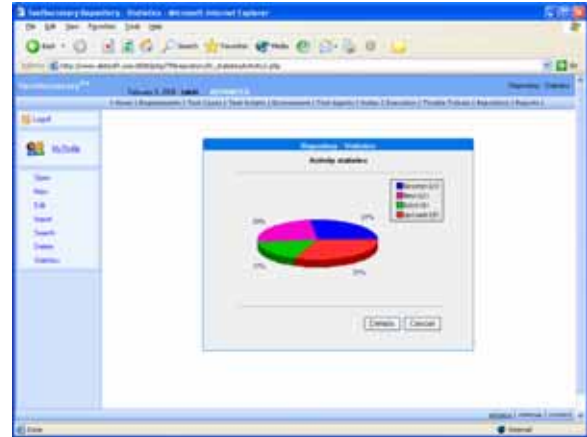
Test Agent Management: TestSecretary provides the Test Agent package to organize and use your automation tools. By creating an agent, you can map tool endpoints to environment interfaces. You can also launch automation runs from TestSecretary. All tool related data can be stored in folders created specifically for the agent.

Execution Management: TestSecretary allows you to execute your test cases in a manual or automated mode. For cases run in an automated mode, TestSecretary's automation engine allows you to schedule tests to run unsupervised at a time of your convenience. Results of tests are posted back into the repository in real time and progress of test runs can be monitored on the Web or on your mobile device.

Trouble Ticket Management: Enter and track your test related defects with TestSecretary's trouble ticketing system. TestSecretary's Trouble Ticket package supports the entire defect lifecycle, from initial problem identification through problem resolution.

Document Management: TestSecretary provides a document management system that allows you to house various test related documents. We understand that not all documents can be integrated into a management system yet it is desirable to have your documents in a central location. Our document repository is designed for this very purpose. You can organize your documents into folders; create, edit or remove files and folders to suit your needs.

Reports Management: In addition to testing related statistics available for each package, if you purchase multiple packages you can view cross package statistics. For example with the purchase of a fully configured version of TestSecretary you can view reports on what percentage of the testing functional requirements are covered by tests, how many of these tests have been run over a time period, and how many have passed or failed over that period.



View statistics resulting from various testing activities - metrics are available for each package.

Key Features

- Supports the end-to-end testing process - requirements management; test case writing; scripting; environment planning; test execution; issue tracking; document archiving; reporting - thought a lightweight Web-based application.
- Simple Standard intuitive Web GUI - the application is easy to use and is available anywhere on your network.
- Multi-lingual support - available in the language of your choice.
- Cross platform capabilities - runs on Windows®, UNIX®, Linux or Mac.
- Comprehensive automation support - integrates heterogeneous scripts and automation tools and allows for cross platform and cross tool execution.
- Allows for 24/7 automation execution with real-time reporting and monitoring - database feed utility enables results to be available as soon as they are posted.
- Available document repository - store all your project related information in one central location.